



# **idealpos** system

**RETAIL MANAGEMENT SOFTWARE**





## POS INTERFACE

Ideal POS System's easy to use POS interface is flexible and can be customized to suit your business. There are a number of ways to enter a sale with most retail businesses using barcode scanners to accurately record sales. You can also program items on the POS screen, scroll through alphabetical menus, type in a product code, browse through images of your products, or use the item search facility to search by description, scan code or product code. Function buttons that perform voids, no-sales, discounts, and refunds can be put in any position or moved to a separate menu layer so only authorized staff can access them.



## SHELF & PRODUCT LABELS

Shelf and Product labels can be generated from the items stored in the database and exported to Avery Design Pro labeling software. The process of printing labels is fully automated with label formats to suit any shape and size label. When stock purchases are entered into the system, you can tick an option to automatically print the correct quantity of shelf or product labels for each item.

## CUSTOMER DATABASE

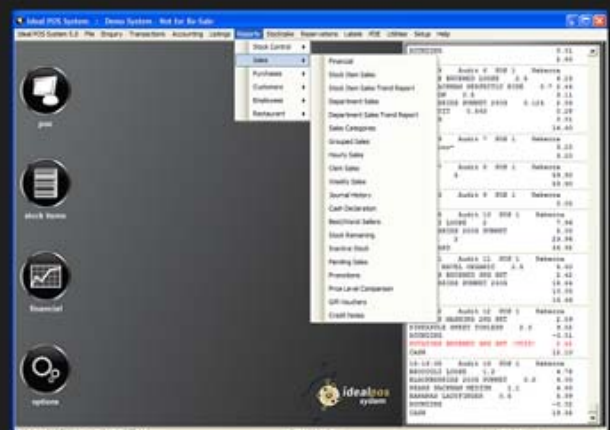
Our software comes standard with a complete customer database to allow you to have various types of customers, including lay-by, credit note, account and loyalty customers. You can add new customers during a sale and enter their personal contact details including phone number, postal and delivery address, email, gender, birth month, company, occupation, marital status and much more.

## CUSTOMER LOYALTY

You can reward your customers by offering points for particular items or on the total dollar value of the sale. Customers can redeem the points for items offered on promotion or use them towards paying for their next transaction.

## STOCK AND SALES REPORTS

Ideal POS System has a wide range of stock and sales reports to choose from. All our reports except our real-time stock level reports are date range based. This means you can easily access previous historical data by entering a from-and-to date range, or selecting from the calendar.





## GIFT VOUCHERS

Gift Vouchers can be sold with the dollar value and name recorded within Ideal POS System. You can print reports to show both redeemed and unredeemed gift vouchers. The Gift Voucher number can be automatically generated, or you can enter a Gift Voucher number from a Gift Certificate or Card.



## EFTPOS

EFTPOS terminals can be interfaced directly to Ideal POS System to eliminate operator mistakes and improve speed of service. When customers choose to pay by EFTPOS, simply select an EFTPOS tender to finalise the sale and EFTPOS software will complete the process and print the receipts.

## SCALES

Scales can be connected to your Ideal POS system so each weighed item can have its price per kilo pre-programmed, allowing accurate sales entry and speedy service. Items can be ticked as 'scale items' in the database, which matches the item to the weight from the scale. Ideal POS System supports most scales brands including Mettler Toledo, PSC Magellan, Digi, Tec, Cas, and Acom. Items that have already been weighed and labeled with the price can be scanned, with the 'programmable barcode' allowing for the retrieval of the price and the product code from the barcode number.

## LAY-BYS

A Lay-by message can be printed at the bottom of the receipt with terms and conditions, with a default maximum lay-by period and minimum deposit options. Customers can hold multiple lay-bys and pay them off separately or all together in one transaction. Ideal POS System records any items that are kept on lay-by as a separate stock level, so you can see what stock you have that can be sold, and what stock is held for lay-by customers.



## CREDIT NOTES

If a Customer returns a product for a refund, you can issue a Credit Note instead of a cash refund. The credit amount and customer's details are recorded within Ideal POS System. You can print reports to show both redeemed and unredeemed Credit Notes.

## IDEAL POS SYSTEM 5.0 FEATURES SUMMARY

<b>POS Interface</b>	Ideal POS System's easy to use POS interface is flexible and can be customized to suit your business. There are a number of ways to enter a sale with most retail businesses using barcode scanners to accurately record sales. You can also program items on the POS screen, scroll through alphabetical menus, type in a product code, browse through images of your products, or use the item search facility to search by description, scan code or product code.
<b>Stock Control</b>	Multi-Location Stock Control with data being sent in 'Real-Time'. You can do a partial stock-take and only count specific items, and/or stock-take one location at a time. Every completed stock-take is archived to allow you to go back and re-print your stock-take variance and valuation reports.
<b>PDE Stock-Take</b>	From the PDE, you can perform multi-location stock-takes, transfer stock between locations, receive new stock and enter the new cost price, and match new bar-coded products to existing stock items.
<b>Recommended and Re-Order Levels</b>	Recommended and Re-Order levels can be set by location and for each stock controlled item. When you are ready to place your next order with your suppliers, you can print a re-order report by supplier to find out what stock needs to be purchased. These levels can also be calculated based on previous sales history.
<b>Purchase Orders</b>	Purchase Orders can be printed, faxed or emailed directly to the supplier with Ideal POS System's built-in 'Outgoing Email Server'.
<b>Stock and Sales Reports</b>	All our reports except our real-time stock level reports are date range based. This means you can easily access previous historical data by entering a from-and-to date range, or selecting from the calendar. Our most powerful report, the 'Finalized Margins Report' will provide real gross profit margins, taking into account stock-take variances, write-offs and discounts.
<b>Promotion Tables</b>	Promotion Tables is a feature in the software which automatically applies a discount without the operator remembering to press a discount key at the end of the sale.
<b>EFTPOS</b>	EFTPOS terminals can be interfaced directly to Ideal POS System to eliminate operator mistakes and improve speed of service. When customers choose to pay by EFTPOS, simply select an EFTPOS tender to finalise the sale and EFTPOS software will complete the process and print the receipts.
<b>Customer Database</b>	Our software comes standard with a complete customer database to allow you to have various types of customers, including lay-by, credit note, account and loyalty customers. You can add new customers during a sale and enter their personal contact details including phone number, postal and delivery address, email, gender, birth month, company, occupation, marital status and much more.
<b>Customer Loyalty</b>	Ideal POS System's built-in Customer Loyalty is extremely versatile, allowing you to choose which POS terminals offer loyalty. For example, you can reward customers by giving them points per dollar at the bar, but not in the bistro; you can set how many points per dollar you will issue for a sale, and a point redemption value. Points can also be offered on specific items that might be part of a promotion, with the ability to have different points for each price level.
<b>Shelf &amp; Product Labels</b>	Shelf and Product labels can be generated from the items stored in the database and exported to Avery Design Pro labelling software.
<b>Scales</b>	Scales can be connected to your Ideal POS System so each weighed item can have its price per kilo pre-programmed, allowing accurate sales entry and speedy service. Items can be ticked as 'scale items' in the database, which matches the item to the weight from the scale.
<b>Gift Vouchers</b>	Gift Vouchers can be sold with the dollar value and name recorded within Ideal POS System. You can print reports to show both redeemed and unredeemed gift vouchers. The Gift Voucher number can be automatically generated, or you can enter a Gift Voucher number from a Gift Certificate or Card.
<b>Credit Notes</b>	If a Customer returns a product for a refund, you can issue a Credit Note instead of a cash refund. The credit amount and customer's details are recorded within Ideal POS System. You can print reports to show both redeemed and unredeemed Credit Notes.
<b>Clerk Security</b>	Set permissions by Clerk for specific types of functions including voids, refunds, discount, price over-rides and more. POS transactions are recorded for each Clerk in the Electronic Journal and Activity Log.
<b>MYOB Accounting Interface*</b>	Send reconciled banking totals and supplier purchase data seamlessly to MYOB Accounting Software via a direct ODBC Database Connection. General Ledger accounts in MYOB are linked to Sale & Purchase Categories in Ideal POS System, along with other POS Functions.
<b>DVR Security Interface</b>	Send sales data 'Live' to Digital Video Recording equipment to match image data with POS transactions.
<b>Email Facility</b>	Customer Tax Invoices and Statements can be sent directly to your customers using Ideal POS System's built-in Email Server. Purchase Orders can also be emailed directly to your Suppliers.
<b>Centralized SQL</b>	As standard, Ideal POS System runs in Peer-to-Peer mode using locally stored MS Access Secured Databases. For larger sites, we recommend the IPS SQL Server Centralized Database. Each POS Terminal still has its own local MS Access database; however all data is stored centrally allowing storage of more data and less network traffic.



**Ideal  
Business  
Software**

Developed by  
**Ideal Business Software Pty Ltd**  
 PO Box 3128 Newstead QLD 4006  
 AUSTRALIA  
 Tel: +61 7 3630 2016  
 Fax: +61 7 3630 2017  
 Email: [info@ibsoftware.com.au](mailto:info@ibsoftware.com.au)

\* This product has not been endorsed and it not supported by MYOB Australia

**Your Local Dealer**

